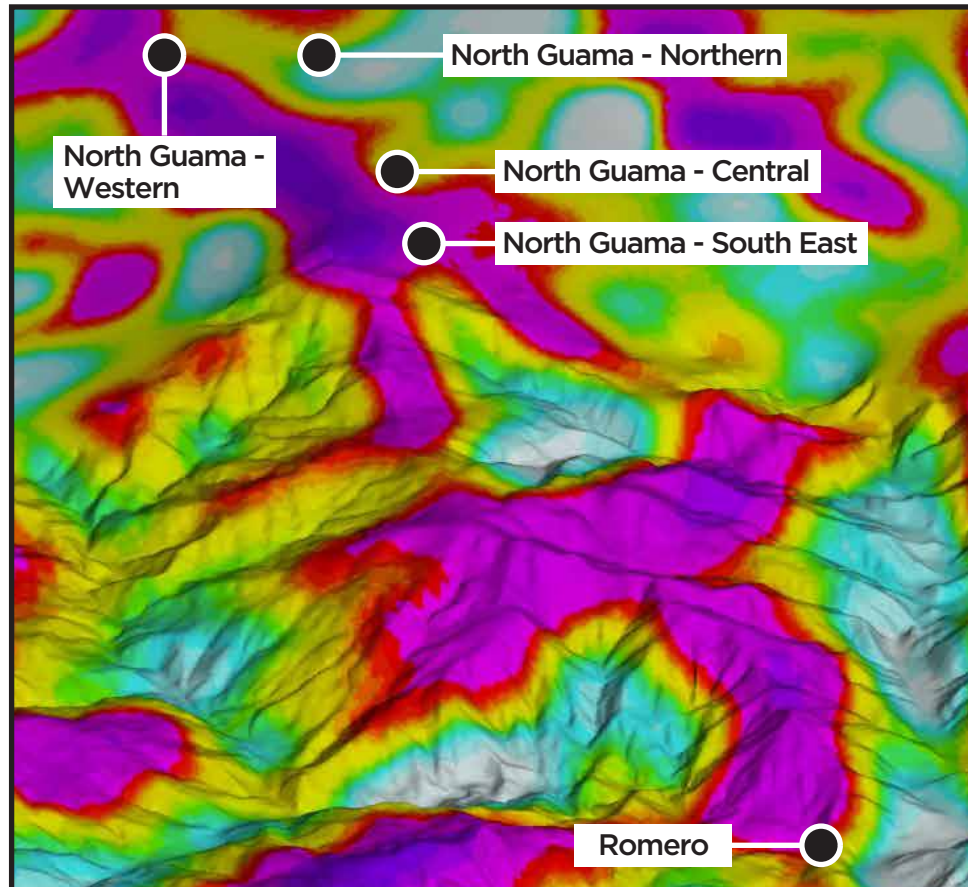
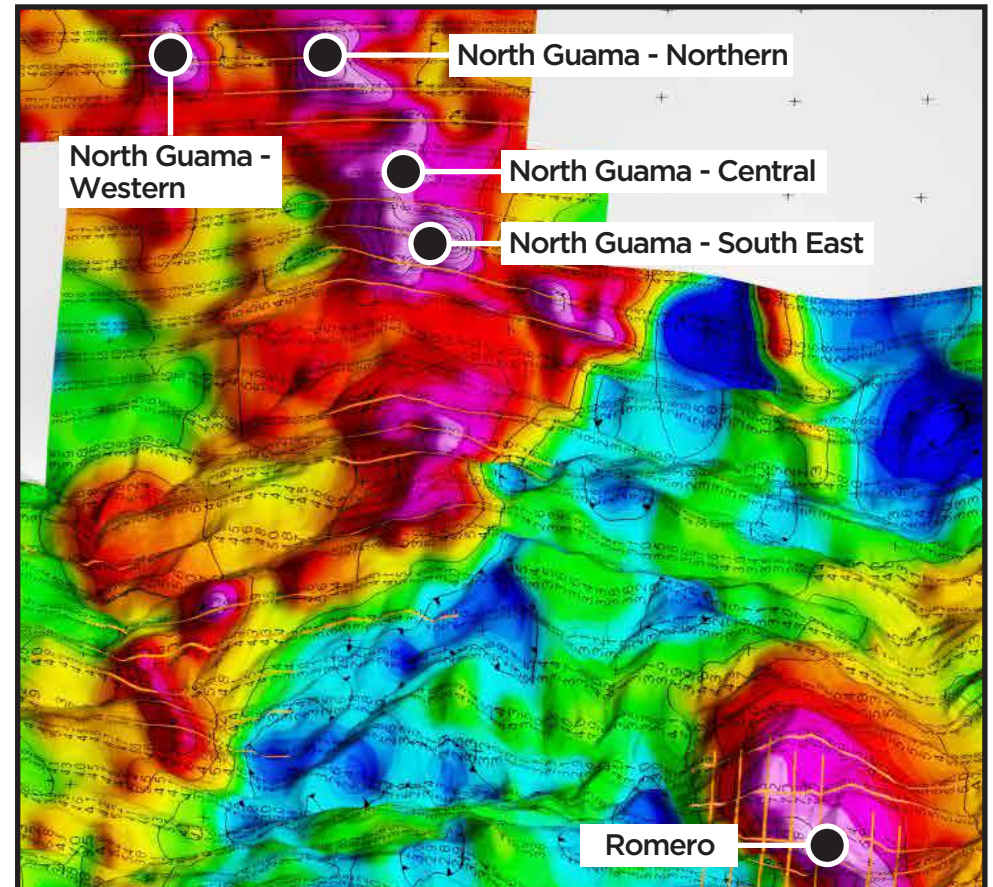




## Resistivity from 2014 Airborne ZTEM Survey (lows in pink)



## Chargeability from 2014 Ground IP Survey (highs in pink)



0 500 m 1 km

### Targets in Las Tres Veredas Concession

# GOLDQUEST

TSXV: GQC

[www.goldquestcorp.com](http://www.goldquestcorp.com)

Date: January 2015

\* Geophysics data draped over topography tilted and looking north.